



ideal Lighting Systems Pvt. Ltd.



PRODUCT SPECIFICATIONS

PRODUCT NAME	LED Weather Proof Clean Room Light	Doc No. - ILS/WP/SPC-66/00
PRODUCT CODE	WPCRLSS-15-XX-YY	Date : 01.04.2016

Characteristics

Characteristics	Std. Value
Luminaries wattage	15 Watt
Input Voltage	230 V
Input Frequency	50 H ₂
Input Current	0.3 A
Power Factor	NA
Athd.	CLASS A
Electrical Efficiency	84%
Light Spreading Angle	120°
Temperature Class	T6
IP Standard	IP65
Total Weight	1.56 Kg
Starting Time	Rapid (0.2 Sec)
Guarantee	2 Years including FLUX/CCT/CRI

LED LAMP	MAKE - CITIZEN JAPAN
Model No	CLU038 - 1205
LED type / No of LED Lamp	COB/ Single Lamp
Total Lumen @Tc 25°C	2243 2352 2261
Lumen Efficacy (Lm/ Watt)	172 lm/W 181 lm/W 174 lm/W
CCT / Color Rendering index	3000K / RA 70 5000K / RA 70 6500K / RA 80

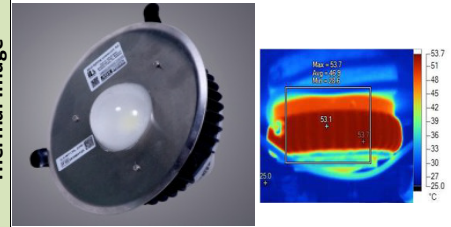
SP Ratio	2-2.25
MacAdam Ellipse Stage	STEP 3
LED -Wattage/Current/Voltage	13W / 370ma/ 35.2V @Tc 25°C
Lamp Life	1,00,000 Hours Min.
Certifications / Reports	LM70, LM80/Photo Bio. Test / Vibration Test
Identification Feature	Unique Serial No. Printed on each Lamp
Actual Test Report of CITIZEN LED Lamp	Actual Operating test Report for 63,000Hrs

LED DRIVER MAKE - MEANWELL	
Model No	APC-16-350
Type of Driver	Constant Current (CC)
Input Voltage Range	90 ~ 264V AC
Frequency Range	47 ~ 63Hz
Inrush current	COLD START 45A
Leakage current	< 0.25 mA / 240VAC
Output Protection	Over Voltage
Withstand Voltage	I/P-0/P:3.75K VAC
Surge Protection	L-N :2KV
MTBF /DMTBF	1145.7K HRS Min / 50,000 HRS @ TCASE 55°C
Capacitor Life Cycle	53375 HRS @ 40°C

OPTICS	
Optics Type	Glass Lens
MOC of Optics	Borosilicate Diffused Glass

FIXTURE \ HEAT SINK	
Make of Fixture	ILS Pvt. Ltd.
Heat Sink Make	ILS (Own Design)
MOC – Heat Sink	Aluminum Extrusion - LM 06
Junction Temperature -T _J	64°C
Case Temperature- T _C	55°C

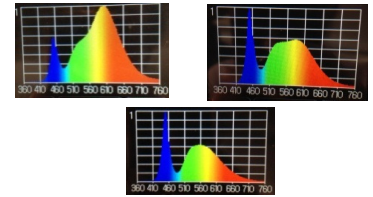
Product Photograph & Thermal Image



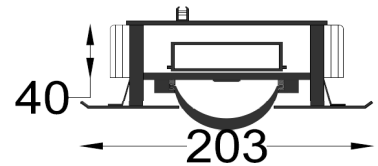
Reference Documents

1. Power Analyser Report With Harmonics
2. Electrical Efficiency Reprot
3. Spectroradiometric Test Report
4. TRT Report
5. LM 79 Report
6. IP 65 Test Report
7. LM 70, LM 80 Report

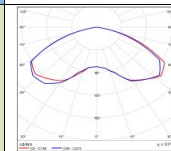
LED Spectrum



Schematic Drawing



Light Distribution Diagram



Actual Test Result

SERIAL NO.	ILS-4020143					
Mfg Date	11-01-2016.1:48:25 PM					
LED SR. No.	F14530518911					
DRIVER SR. NO.	HB42A79110					
Input	V	A	HZ	W	VA	PF
	240.30	0.154	50	15.17	37.01	0.41
Output	DC.V	DC.A	DC.W	EFF	THD	
	37.20	0.348	12.95	85.35	A class	

ILS SPECIALITY : This Fixture is having Lowest Thermal Resistance and single optics. ILS products are having Precise Thermal Management for longer life and Precise light spreading angle for required illumination.

Prepared By	Reviewed By	Approved By