



# ideal Lighting Systems Pvt. Ltd.



## PRODUCT SPECIFICATIONS

PRODUCT NAME	LED Weather Proof Flood Light	Doc No. - ILS/WP/SPC-157/0
PRODUCT CODE	WPFLCS5-220-XX-YY	Date : 01.04.2016

Characteristics	Std. Value	
LUMINARIES	Luminaries wattage	220 Watt
	Input Voltage	230 V
	Input Frequency	50 H <sub>2</sub>
	Input Current	2.0 A
	Power Factor	> 0.95
	Athd.	CLASS C
	Efficiency	94%
	Light Spreading Angle	60°/ 90° / 120° / 120°x 60°
	Temperature Class	T6
	IP Standard	IP65
Total Weight	8.12Kg	
Starting Time	Rapid ( 0.2 Sec)	
Guarantee	5 Years including FLUX/CCT/CRI	

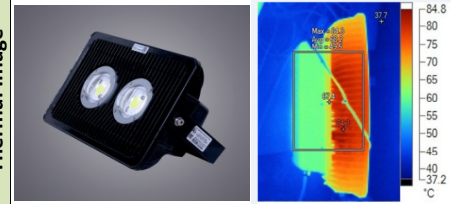
LED LAMP MAKE – CITIZEN JAPAN	Model No	CLU048 - 1818		
	LED type / No of LED Lamp	COB/ Double Lamp		
	Total Lumen @Tc 25°C	31084	32594	31322
	Lumen Efficacy (Lm/ Watt)	154 lm/W	161 lm/W	155 lm/W
	CCT / Color Rendering index	3000K / RA 70	5000K / RA 70	6500K / RA 80
	SP Ratio	2-2.25		
	MacAdam Ellipse Stage	STEP 3		
	LED -Wattage/Current/Voltage	202 W / 3716 mA/ 54.4 V @Tc 25°C		
	Lamp Life	1,00,000 Hours Min.		
	Certifications / Reports	LM70, LM80/Photo Bio. Test / Vibration Test		
Identification Feature	Unique Serial No. Printed on each Lamp			
Actual Test Report of CITIZEN LED Lamp	Actual Operating test Report for 63,000Hrs			

LED DRIVER MAKE - MEANWELL	Model No	HLG-240-54		
	Type of Driver	Constant Current (CC)		
	Input Voltage Range	90VAC ~ 305 VAC		
	Frequency Range	47 ~ 63Hz		
	Inrush current	COLD START 75A		
	Leakage current	< 0.75 mA / 240VAC		
	Output Protection	Short Circuit, Over Voltage, Over Current, Over Temperature.		
	Withstand Voltage	I/P-0/P:3.75K VAC Min.		
	Surge Protection	L-N :4KV		
	MTBF /DMTBF	207.9KHRS Min / 50,000 HRS @ TCASE 70°C		
Capacitor Life Cycle	27898 HRS @ 60°C			

OPTICS	Optics Type	Glass Lens		
	MOC of Optics	Borosilicate Glass		
	Optics Efficiency	96%		

FIXTURE \ HEAT SINK	Make of Fixture	ILS Pvt.Ltd.		
	Heat Sink Make	ILS (Own Design)		
	MOC – Heat Sink	Aluminum Casting - LM 06		
	Junction Temperature -T <sub>J</sub>	102°C		
	Case Temperature- T <sub>C</sub>	85°C		

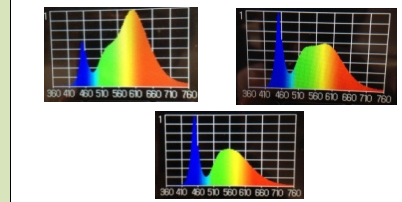
Product Photograph & Thermal Image



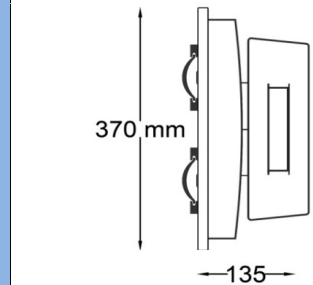
Reference Documents

1. Power Analyser Report With Harmonics
2. Electrical Efficiency Reprot
3. Spectroradiometric Test Report
4. TRT Report
5. LM 79 Report
6. IP 65 Test Report
7. LM 70, LM 80 Report

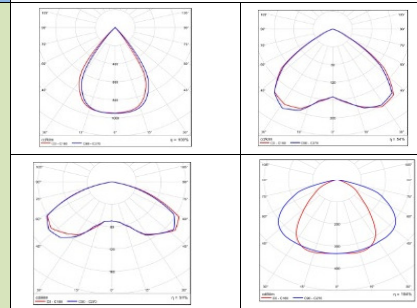
LED Spectrum



Schematic Drawing



Light Distribution Diagram



Actual Test Result

SERIAL NO.	ILS-60202584					
Mfg Date	16-01-2016.3:58:06 PM					
LED SR. No.	F14530518878					
DRIVER SR. NO.	HB42A79141					
Input	V	A	Hz	W	VA	PF
	240.65	0.945	50	220.59	227.41	0.97
Output	DC.V	DC.A	DC.W	EFF	THD	
	55.87	3.631	202.89	91.98	C class	

**ILS SPECIALITY : This Fixture is having Lowest Thermal Resistance and single optics. ILS products are having Precise Thermal Management for longer life and Precise light spreading angle for required illumination.**

Prepared By	Reviewed By	Approved By