



# ideal Lighting Systems Pvt. Ltd.



## PRODUCT SPECIFICATIONS

PRODUCT NAME	LED Weather Proof Bay Light - Platinum	Doc No. - ILS/WP/SPC-122/0
PRODUCT CODE	WPMBEHB-45-XX-YY	Date : 01.04.2016

Characteristics	Std. Value
Luminaries wattage	45 Watt
Input Voltage	230 V
Input Frequency	50 Hz
Input Current	0.4 A
Power Factor	> 0.95
Athd.	CLASS C
Efficiency	90%
Light Spreading Angle	60° / 90° / 120°
Temperature Class	T6
IP Standard	IP65
Total Weight	2.4 Kg
Starting Time	Rapid ( 0.2 Sec)
Guarantee	5 Years including FLUX/CCT/CRI

Model No	CLU048 - 1212		
LED type / No of LED Lamp	COB/ Single Lamp		
Total Lumen @Tc 25°C	6640	6961	6689
Lumen Efficacy (lm/ Watt)	166 lm/W	174 lm/W	167 lm/W
CCT / Color Rendering index	3000K / RA 70	5000K / RA 70	6500K / RA 80

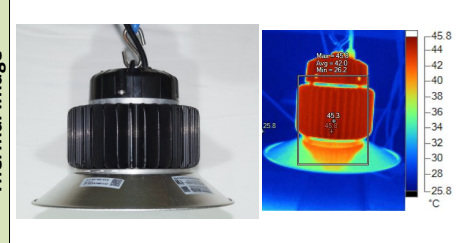
SP Ratio	2-2.25		
MacAdam Ellipse Stage	STEP 3		
LED -Wattage/Current/Voltage	40W / 1115ma/ 35.9 V @Tc 25°C		
Lamp Life	1,00,000 Hours Min.		
Certifications / Reports	LM70, LM80/Photo Bio. Test / Vibration Test		
Identification Feature	Unique Serial No. Printed on each Lamp		
Actual Test Report of CITIZEN LED Lamp	Actual Operating test Report for 63,000Hrs		

Model No	HBG-60-1400		
Type of Driver	Constant Current (CC)		
Input Voltage Range	90VAC ~ 295 VAC		
Frequency Range	47 ~ 63Hz		
Inrush current	COLD START 45A		
Leakage current	< 0.75 mA / 240VAC		
Output Protection	Short Circuit, Over Temperature		
Withstand Voltage	I/P-0/P:3.75K VAC Min.		
Surge Protection	L-N :2KV		
MTBF /DMTBF	452K HRS Min / 50,000 HRS @ TCASE 75°C		
Capacitor Life Cycle	67540 HRS @ 50°C		

Optics Type	Glass Lens / Diffuser
MOC of Optics	Borosilicate Glass

Make of Fixture	ILS Pvt. Ltd.
Heat Sink Make	ILS (Own Design)
MOC – Heat Sink	Aluminum Extrusion - LM 06
Junction Temperature -T <sub>J</sub>	68°C
Case Temperature- T <sub>C</sub>	55°C

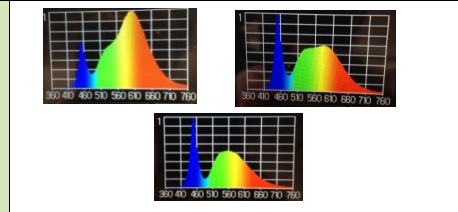
Product Photograph & Thermal Image



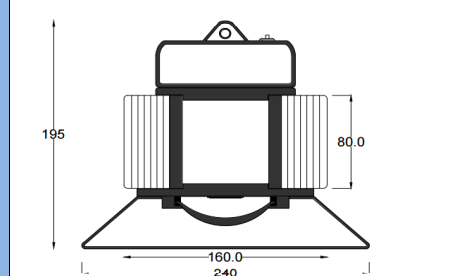
Reference Documents

1. Power Analyser Report With Harmonics
2. Electrical Efficiency Reprot
3. Spectroradiometric Test Report
4. TRT Report
5. LM 79 Report
6. IP 65 Test Report
7. LM 70, LM 80 Report

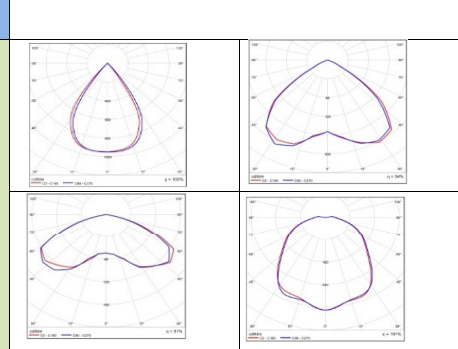
LED Spectrum



Schematic Drawing



Light Distribution Diagram



Actual Test result

SERIAL NO.	ILS-4020145					
Mfg Date	11-01-2016.1:48:48 PM					
LED SR. No.	F14530518921					
DRIVER SR. NO.	HB42A79188					
Input	V	A	HZ	W	VA	PF
	241.66	0.210	50	46.18	50.75	0.91
Output	DC.V	DCA	DC.W	EFF	THD	
	36.15	1.103	39.87	86.33	C class	

**ILS SPECIALITY : This Fixture is having Lowest Thermal Resistance and single optics. ILS products are having Precise Thermal Management for longer life and Precise light spreading angle for required illumination.**

Prepared By	Reviewed By	Approved By