



ideal Lighting Systems Pvt. Ltd.



PRODUCT SPECIFICATIONS

| | | |
|--------------|-----------------------------------|----------------------------|
| PRODUCT NAME | LED Weather Proof Bay Light - Gem | Doc No. - ILS/WP/SPC-107/0 |
| PRODUCT CODE | WPHBCHB-200-XX-YY | Date : 01.04.2016 |

| Characteristics | Std. Value |
|-----------------------|--------------------------------|
| Luminaries wattage | 200 Watt |
| Input Voltage | 230 V |
| Input Frequency | 50 H ₂ |
| Input Current | 1.3 A |
| Power Factor | > 0.95 |
| Athd. | CLASS C |
| Efficiency | 93% |
| Light Spreading Angle | 60° / 90° / 120° |
| Temperature Class | T6 |
| IP Standard | IP65 |
| Total Weight | 7 Kg |
| Starting Time | Rapid (0.2 Sec) |
| Guarantee | 5 Years including FLUX/CCT/CRI |

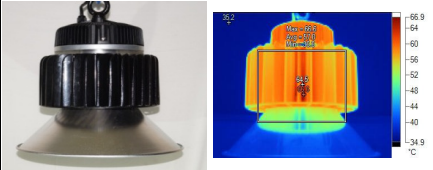
| LUMINARIES | Std. Value |
|--|---|
| Model No | CLU058 - 1825 |
| LED type / No of LED Lamp | COB/ Single Lamp |
| Total Lumen @Tc 25°C | 28091 29455 28305 |
| Lumen Efficacy (Lm/ Watt) | 153 lm/W 160 lm/W 154 lm/W |
| CCT / Color Rendering index | 3000K / RA 70 5000K / RA 70 6500K / RA 80 |
| SP Ratio | 2-2.25 |
| MacAdam Ellipse Stage | STEP 3 |
| LED -Wattage/Current/Voltage | 184W / 3305 mA/ 55.7 V @Tc 25°C |
| Lamp Life | 1,00,000 Hours Min. |
| Certifications / Reports | LM70, LM80/Photo Bio. Test / Vibration Test |
| Identification Feature | Unique Serial No. Printed on each Lamp |
| Actual Test Report of CITIZEN LED Lamp | Actual Operating test Report for 63,000Hrs |

| LED LAMP MAKE – CITIZEN JAPAN | Std. Value |
|-------------------------------|--|
| Model No | HBG-240-60 |
| Type of Driver | Constant Current (CC) |
| Input Voltage Range | 90VAC ~ 305 VAC |
| Frequency Range | 47 ~ 63Hz |
| Inrush current | COLD START 75A |
| Leakage current | < 0.75 mA / 240VAC |
| Output Protection | Short Circuit, Over Voltage, Over Current, Over Temperature. |
| Withstand Voltage | I/P-0/P:3.75K VAC Min. |
| Surge Protection | L-N :4KV |
| MTBF /DMTBF | 190 KHRS Min / 50,000 HRS @ TCASE 70°C |
| Capacitor Life Cycle | 48791.3 HRS @ 60°C |

| LED DRIVER MAKE - MEANWELL | Std. Value |
|----------------------------|-----------------------|
| Optics Type | Glass Lens / Diffuser |
| MOC of Optics | Borosilicate Glass |

| OPTICS | Std. Value |
|--------------------------------------|--------------------------|
| Make of Fixture | ILS Pvt.Ltd. |
| Heat Sink Make | ILS (Own Design) |
| MOC – Heat Sink | Aluminum Casting - LM 06 |
| Junction Temperature -T _J | 99°C |
| Case Temperature- T _C | 70°C |

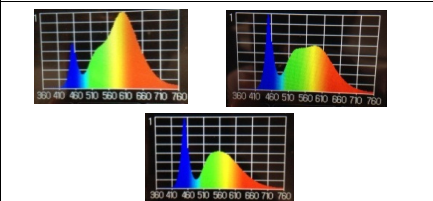
Product Photograph & Thermal Image



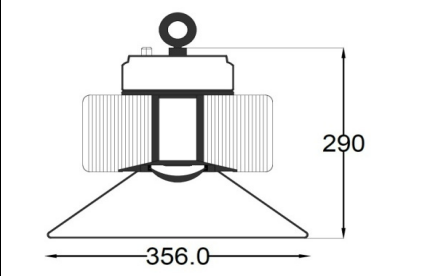
Reference Documents

1. Power Analyser Report With Harmonics
2. Electrical Efficiency Reprot
3. Spectroradiometric Test Report
4. TRT Report
5. LM 79 Report
6. IP 65 Test Report
7. LM 70, LM 80 Report

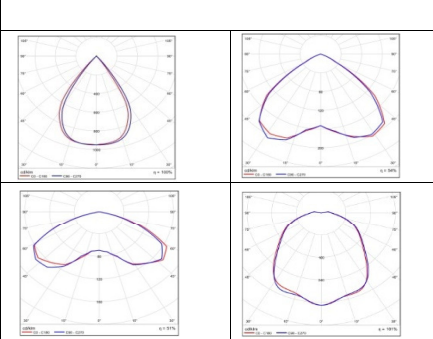
LED Spectrum



Schematic Drawing



Light Distribution Diagram



Actual Test result

| | | | | | | |
|----------------|-----------------------|-------|--------|--------|--------|---------|
| SERIAL NO. | ILS-60202583 | | | | | |
| Mfg Date | 16-01-2016.3:18:06 PM | | | | | |
| LED SR. No. | F14530518876 | | | | | |
| DRIVER SR. NO. | HB42A79139 | | | | | |
| Input | V | A | HZ | W | VA | PF |
| | 240.02 | 0.860 | 50 | 200.27 | 206.47 | 0.97 |
| Output | DC.V | DC.A | DC.W | EFF | THD | |
| | 55.99 | 3.287 | 184.06 | 91.91 | | C class |

ILS SPECIALITY : This Fixture is having Lowest Thermal Resistance and single optics. ILS products are having Precise Thermal Management for longer life and Precise light spreading angle for required illumination.

| | | |
|-------------|-------------|-------------|
| Prepared By | Reviewed By | Approved By |
| | | |