



# ideal Lighting Systems Pvt. Ltd.



## PRODUCT SPECIFICATIONS

|              |  |                            |
|--------------|--|----------------------------|
| PRODUCT NAME | LED Weather Proof Bay Light - Economical | Doc No. - ILS/WP/SPC-91/00 |
| PRODUCT CODE | WPHBECO-160-XX-YY                        | Date : 01.04.2016          |

| Characteristics | Std. Value                     |                  |
|-----------------|--------------------------------|------------------|
| LUMINARIES      | Luminaries wattage             | 160 Watt         |
|                 | Input Voltage                  | 230 V            |
|                 | Input Frequency                | 50 Hz            |
|                 | Input Current                  | 0.9A             |
|                 | Power Factor                   | > 0.95           |
|                 | Athd.                          | CLASS C          |
|                 | Efficiency                     | 91%              |
|                 | Light Spreading Angle          | 60°/ 90°/ 120°   |
|                 | Temperature Class              | T6               |
|                 | IP Standard                    | IP65             |
|                 | Total Weight                   | 4.84 Kg          |
|                 | Starting Time                  | Rapid ( 0.2 Sec) |
| Guarantee       | 5 Years including FLUX/CCT/CRI |                  |

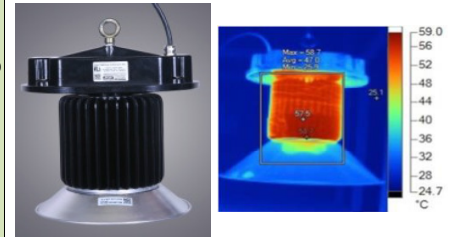
|  |  |   |               |               |
|--|--|---|---------------|---------------|
| LED LAMP<br>MAKE – CITIZEN JAPAN       | Model No                                   | CLU048 - 1818                               |               |               |
|  | LED type / No of LED Lamp                  | COB/ Single Lamp                            |               |               |
|  | Total Lumen @Tc 25°C                       | 20868                                       | 21882         | 21028         |
|  | Lumen Efficacy (Lm/ Watt)                  | 143 lm/W                                    | 150 lm/W      | 144 lm/W      |
|  | CCT / Color Rendering index                | 3000K / RA 70                               | 5000K / RA 70 | 6500K / RA 80 |
|  | SP Ratio                                   | 2-2.25                                      |               |               |
|  | MacAdam Ellipse Stage                      | STEP 3                                      |               |               |
|  | LED -Wattage/Current/Voltage               | 146W / 2590ma/ 56.4 V @Tc 25°C              |               |               |
|  | Lamp Life                                  | 1,00,000 Hours Min.                         |               |               |
|  | Certifications / Reports                   | LM70, LM80/Photo Bio. Test / Vibration Test |               |               |
| Identification Feature                 | Unique Serial No. Printed on each Lamp     |   |               |               |
| Actual Test Report of CITIZEN LED Lamp | Actual Operating test Report for 63,000Hrs |   |               |               |

|                            |                     |  |
|----------------------------|---------------------|--|
| LED DRIVER MAKE - MEANWELL | Model               | ELG-150-54   |
|                            | Type of Driver      | Constant Current (CC)  |
|                            | Input Voltage Range | 180 ~ 295V AC  |
|                            | Frequency Range     | 47 ~ 63Hz  |
|                            | Inrush current      | COLD START 65A   |
|                            | Leakage current     | < 0.75 mA / 277V AC  |
|                            | Output Protection   | Short Circuit, Over Voltage, Over Current, Over Temperature. |
|                            | Withstand Voltage   | I/P-0/P:3.75K VAC Min.                                       |
|                            | Surge Protection    | L-N :4KV, L-N-PE:6KV   |
|                            | MTBF /DMTBF         | 313.66K HRS min / 50,000 HRS @ TCASE 75°C                    |
| Capacitor Life Cycle       | 48117 HRS @ 60°C    |  |

|        |               |                    |
|--------|---------------|--------------------|
| OPTICS | Optics Type   | Glass Lens         |
|        | MOC of Optics | Borosilicate Glass |

|                     |                                      |                            |
|---------------------|--------------------------------------|----------------------------|
| FIXTURE \ HEAT SINK | Make of Fixture                      | ILS Pvt.Ltd.               |
|                     | Heat Sink Make                       | ILS (Own Design)           |
|                     | MOC – Heat Sink                      | Aluminum Extrusion - LM 06 |
|                     | Junction Temperature -T <sub>j</sub> | 99°C                       |
|                     | Case Temperature- T <sub>c</sub>     | 75°C                       |

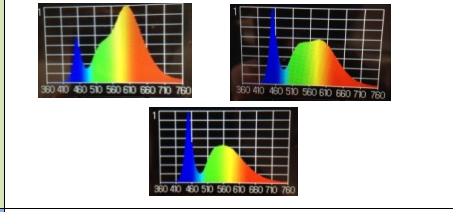
Product Photograph & Thermal Image



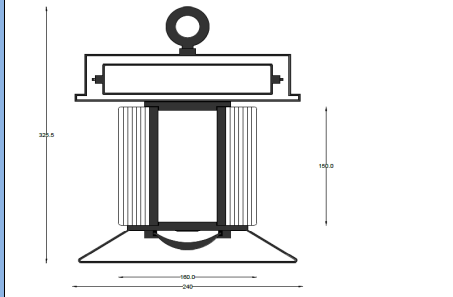
Reference Documents

1. Power Analyser Report With Harmonics
2. Electrical Efficiency Reprot
3. Spectroradiometric Test Report
4. TRT Report
5. LM 79 Report
6. IP 65 Test Report
7. LM 70, LM 80 Report

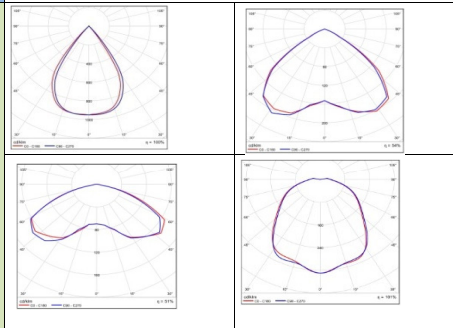
LED Spectrum



Schematic Drawing



Light Distribution Diagram



Actual Test result

|                |        |                       |        |        |         |      |
|----------------|--------|-----------------------|--------|--------|---------|------|
| SERIAL NO.     |        | ILS-60202581          |        |        |         |      |
| Mfg Date       |        | 16-01-2016.3:19:06 PM |        |        |         |      |
| LED SR. No.    |        | F1453051889B          |        |        |         |      |
| DRIVER SR. NO. |        | HB42A79135            |        |        |         |      |
| Input          | V      | A                     | Hz     | W      | VA      | PF   |
|                | 241.02 | 0.689                 | 50     | 161.08 | 166.06  | 0.97 |
| Output         | DC.V   | DC.A                  | DC.W   | EFF    | THD     |      |
|                | 56.80  | 2.589                 | 147.05 | 91.29  | C class |      |

**ILS SPECIALITY :** This Fixure is having Lowest Thermal Resistance and single optics. ILS products are having Precise Thermal Management for longer life and Precise light spreading angle for required illumination.

|             |             |             |
|-------------|-------------|-------------|
| Prepared By | Reviewed By | Approved By |
|             |             |             |