



# ideal Lighting Systems Pvt. Ltd.



## PRODUCT SPECIFICATIONS

PRODUCT NAME	LED Flame Proof Flood Light	Doc No. - ILS/FP/SPC-33/00
PRODUCT CODE	FLPFLKB-100-XX-YY	Date : 01.04.2016

Characteristics	Std. Value
Luminaries wattage	100 Watt
Input Voltage	230 V
Input Frequency	50 Hz
Input Current	0.6 A
Power Factor	> 0.95
Athd.	CLASS C
Efficiency	91%
Light Spreading Angle	60° / 90° / 120°
Temperature Class	T6
IP Standard	IP66
Total Weight	22.0Kg
Starting Time	Rapid ( 0.2 Sec)
Guarantee	5 Years including FLUX/CCT/CRI

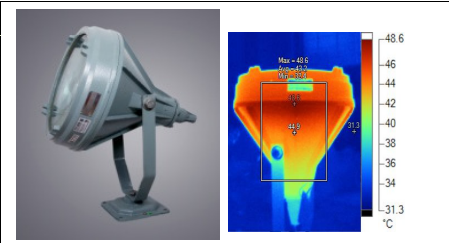
LED LAMP MAKE – CITIZEN JAPAN	Std. Value		
Model No	CLU048 - 1818		
LED type / No of LED Lamp	COB/ Single Lamp		
Total Lumen @Tc 25°C	14132	14819	14250
Lumen Efficacy (Lm/ Watt)	157 lm/W	165 lm/W	158 lm/W
CCT / Color Rendering index	3000K / RA 70	5000K / RA 70	6500K / RA 80
SP Ratio	2-2.25		
MacAdam Ellipse Stage	STEP 3		
LED -Wattage/Current/Voltage	90W / 1673ma/ 53.8 V @Tc 25°C		
Lamp Life	1,00,000 Hours Min.		
Certifications / Reports	LM70, LM80/Photo Bio. Test / Vibration Test		
Identification Feature	Unique Serial No. Printed on each Lamp		
Actual Test Report of CITIZEN LED Lamp	Actual Operating test Report for 63,000Hrs		

LED DRIVER MAKE - MEANWELL	Std. Value
Model No	ELG-100-54
Type of Driver	Constant Current (CC)
Input Voltage Range	100VAC ~ 305 VAC
Frequency Range	47 ~ 63Hz
Inrush current	COLD START 60A
Leakage current	< 0.75 mA / 240VAC
Output Protection	Short Circuit, Over Voltage,Over Temperature.
Withstand Voltage	I/P-0/P:3.75K VAC Min.
Surge Protection	L-N :4KV , L-N-E: 6KV
MTBF /DMTBF	282.9K HRS Min / 50,000 HRS @ TCASE 70°C
Capacitor Life Cycle	48560 HRS @ 50°C

OPTICS	Std. Value
Optics Type	Glass Lens
MOC of Optics	Borosilicate Glass
Secondary Optics	Toughned Glass

FIXTURE \ HEAT SINK	Std. Value
Make of Fixture	Kaysons
Certification	CMRI Certified including LED Lamp
Heat Sink Make	ILS (Own Design)
MOC – Heat Sink	Aluminum Extrusion - LM 06
Junction Temperature -T <sub>J</sub>	70°C
Case Temperature- T <sub>C</sub>	55°C

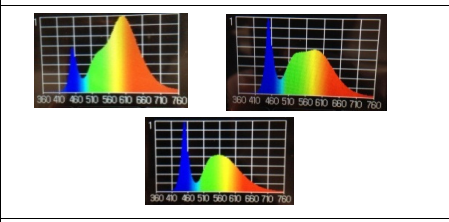
Product Photograph & Thermal Image



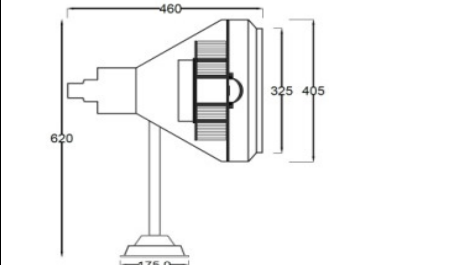
Reference Documents

1. Power Analyser Report With Harmonics
2. Electrical Efficiency Reprt
3. Spectroradiometric Test Report
4. TRT Report
5. LM 79 Report
6. IP 66 Test Report
7. LM 70, LM 80 Report

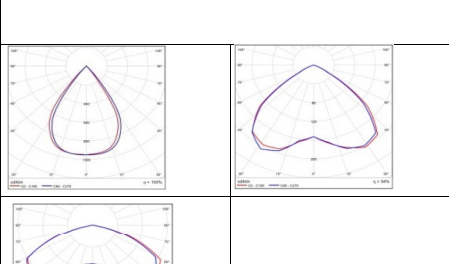
LED Spectrum



Schematic Drawing



Light Distribution Diagram



Actual Test Report

SERIAL NO.	ILS-4020188					
Mfg Date	11-01-2016.10:18:02 PM					
LED SR. No.	F14530518155					
DRIVER SR. NO.	HB42A79159					
Input	V	A	Hz	W	VA	PF
	241.02	0.439	50	101.58	105.81	0.96
Output	DC.V	DC.A	DC.W	EFF	THD	
	54.82	1.664	91.20	89.79	C.class	

**ILS SPECIALITY :** This Fixture is providing required spreaded illumination level without Glare through diffused light. ILS products are having Precise Thermal management for longer life and Precise light spreading angle for required illumination.

Prepared By	Reviewed By	Approved By