



ideal Lighting Systems Pvt. Ltd.



PRODUCT SPECIFICATIONS

PRODUCT NAME	LED Flame Proof Clean Room	Doc No. - ILS/FP/SPC-29/00
PRODUCT CODE	FLPCRBG-60-XX-YY	Date : 01.04.2016

Characteristics

Characteristics	Std. Value
Luminaries wattage	60 Watt
Input Voltage	230 V
Input Frequency	50 Hz
Input Current	0.6 A
Power Factor	> 0.90
Athd.	CLASS C
Efficiency	86%
Light Spreading Angle	120°
Temperature Class	T6
IP Standard	IP66
Total Weight	12.7Kg
Starting Time	Rapid (0.2 Sec)
Guarantee	3 Years including FLUX/CCT/CRI

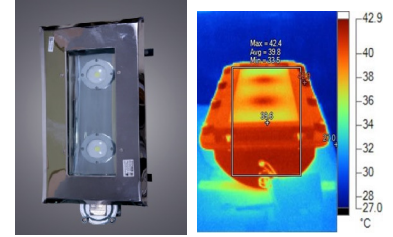
LED LAMP MAKE – CITIZEN JAPAN	Model No	CLU038 - 1208
LED type / No of LED Lamp	COB/ Double Lamp	
Total Lumen @Tc 25°C	8704	9070
Lumen Efficacy (Lm/ Watt)	160 lm/W	168 lm/W
CCT / Color Rendering index	3000K / RA 70	5000K / RA 70
SP Ratio	2-2.25	
MacAdam Ellipse Stage	STEP 3	
LED -Wattage/Current/Voltage	54W / 1504mA/ 35.9 V @Tc 25°C	
Lamp Life	1,00,000 Hours Min.	
Certifications / Reports	LM70, LM80/Photo Bio. Test / Vibration Test	
Identification Feature	Unique Serial No. Printed on each Lamp	
Actual Test Report of CITIZEN LED Lamp	Actual Operating test Report for 63,000Hrs	

LED DRIVER MAKE - MEANWELL	Model No	PLD-60-1400B
Type of Driver	Constant Current (CC)	
Input Voltage Range	180VAC ~ 295 VAC	
Frequency Range	47 ~ 63Hz	
Inrush current	COLD START 25A	
Leakage current	< 0.5 mA / 240VAC	
Output Protection	Short Circuit, Over Temperature	
Withstand Voltage	I/P-0/P:3.75K VAC Min.	
Surge Protection	L-N :2KV	
MTBF /DMTBF	458.85K HRS Min / 50,000 HRS @ TCASE 65°C	
Capacitor Life Cycle	49694.1 HRS @ 50°C	

OPTICS	Optics Type	Glass Diffuser
MOC of Optics	Borosilicate Diffused Glass	
Secondary Optics	Toughned Glass	

FIXTURE / HEAT SINK	Make of Fixture	Sudhir
Certification	CMRI Certified including LED Lamp	
Heat Sink Make	ILS (Own Design)	
MOC – Heat Sink	Aluminum Extrusion - LM 06	
Junction Temperature -T _j	68°C	
Case Temperature- T _c	55°C	

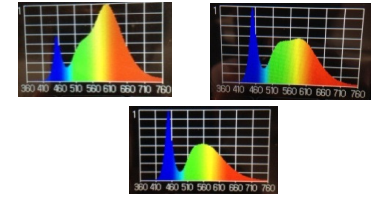
Product Photograph & Thermal Image



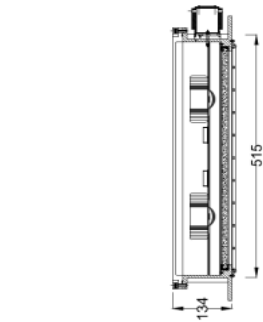
Reference Documents

1. Power Analyser Report With Harmonics
2. Electrical Efficiency Report
3. Spectroradiometric Test Report
4. TRT Report
5. LM 79 Report
6. IP 66 Test Report
7. LM 70, LM 80 Report

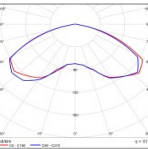
LED Spectrum



Schematic Drawing



Light Distribution Diagram



Actual Test Report

SERIAL NO.	ILS-4020149					
Mfg Date	11-01-2016.10:48:48 PM					
LED SR. No.	F14530518925					
DRIVER SR. NO.	HB42A79189					
Input	V	A	HZ	W	VA	PF
	239.45	0.278	50	61.91	66.57	0.93
Output	DC.V	DCA	DC.W	EFF	THD	
	53.87	1.004	54.09	87.37	C class	

ILS SPECIALITY : This Fixture is providing required spreaded illumination level without Glare through diffused light. ILS products are having Precise Thermal management for longer life and Precise light spreading angle for required illumination.

Prepared By	Reviewed By	Approved By